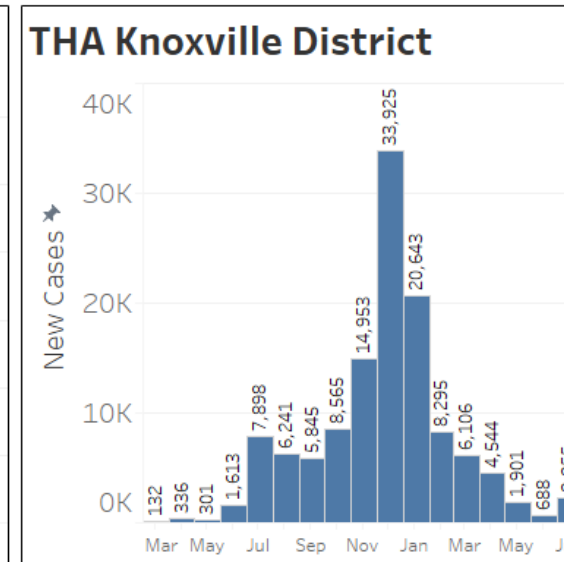
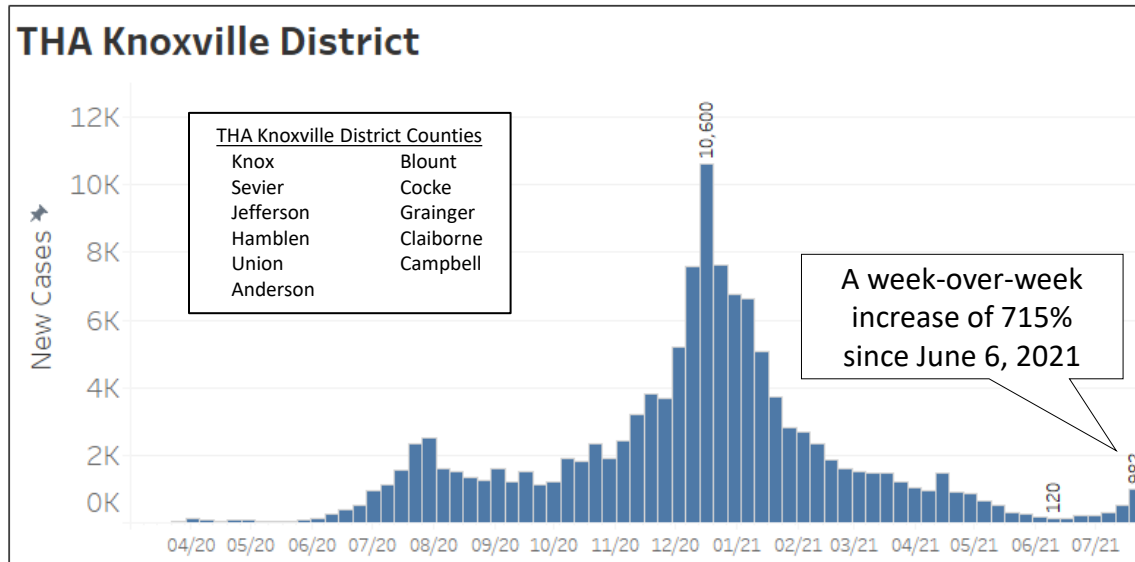
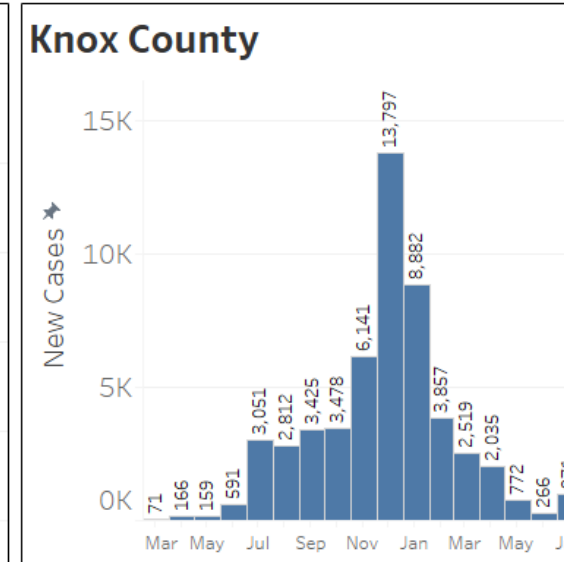
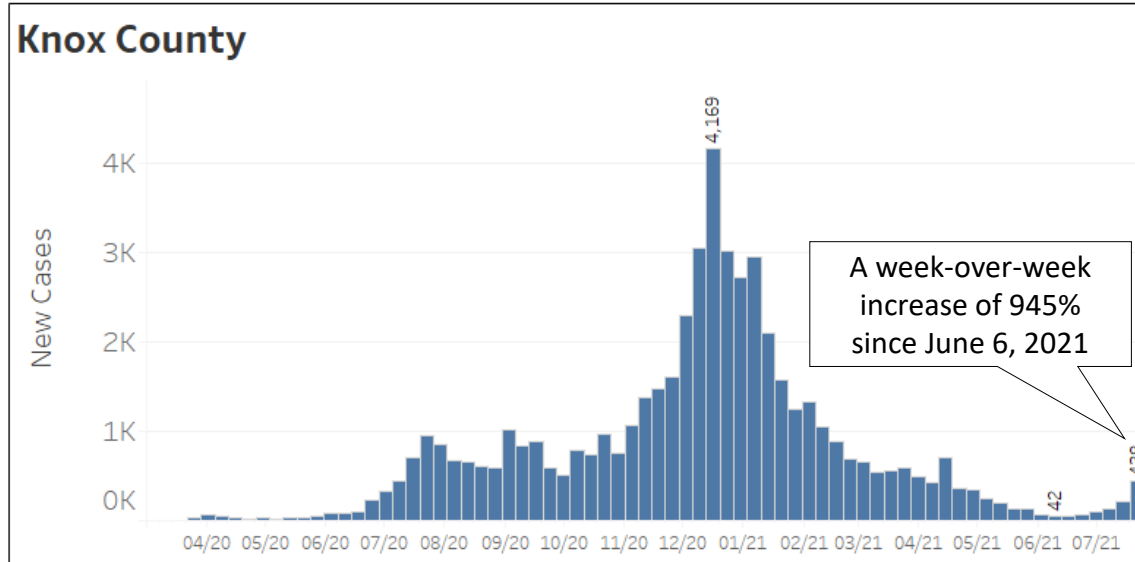


# COVID-19 Data Update

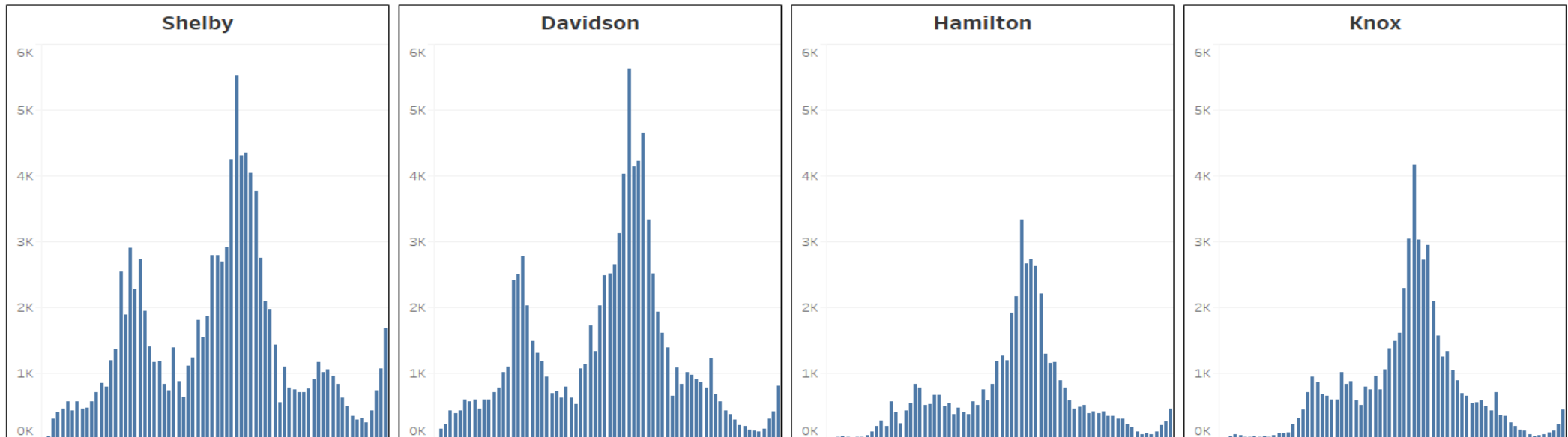
July 28, 2021

Knox County Advisory Board of Health

# New Cases by Week/Month

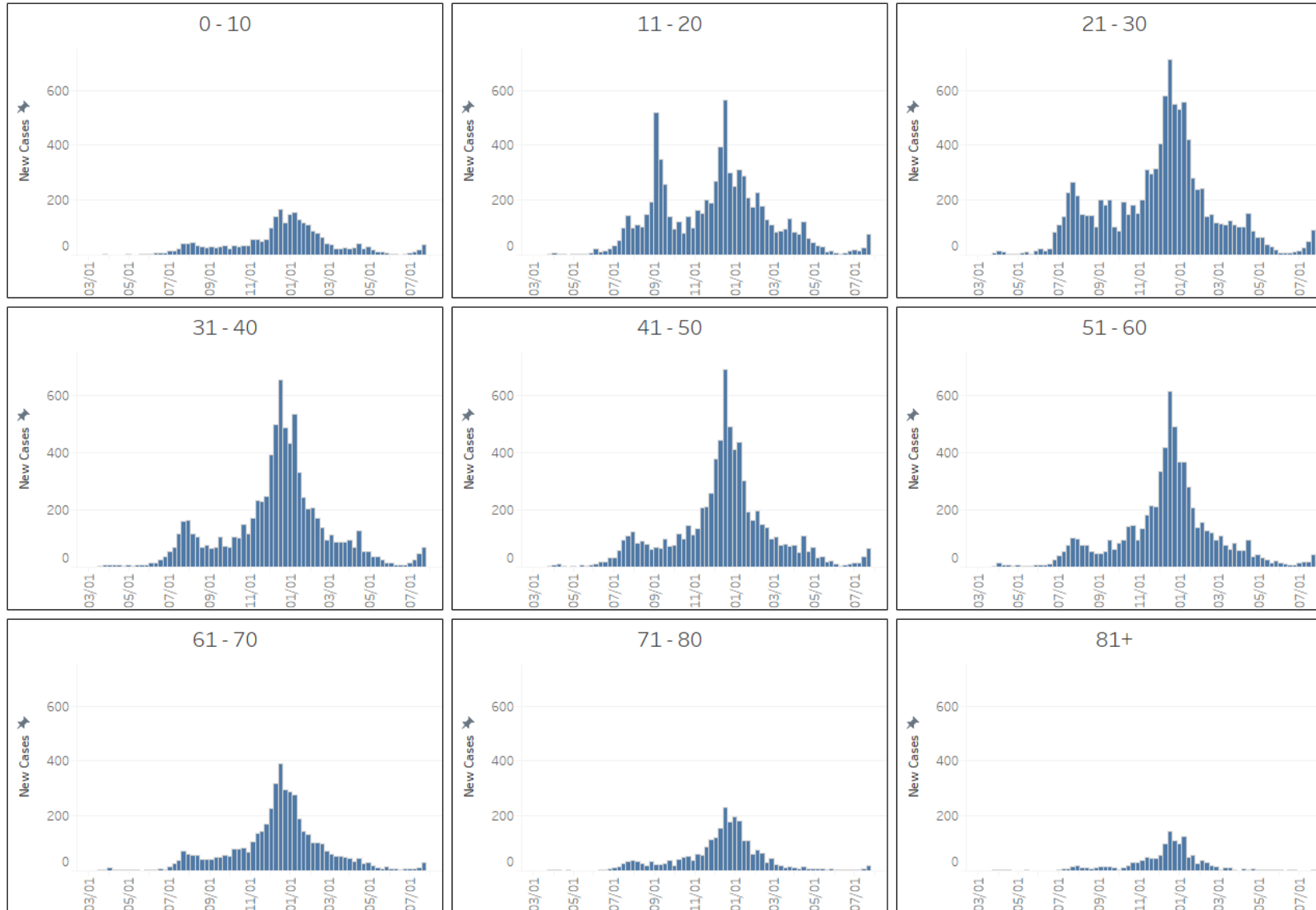


# “Big 4” Comparison



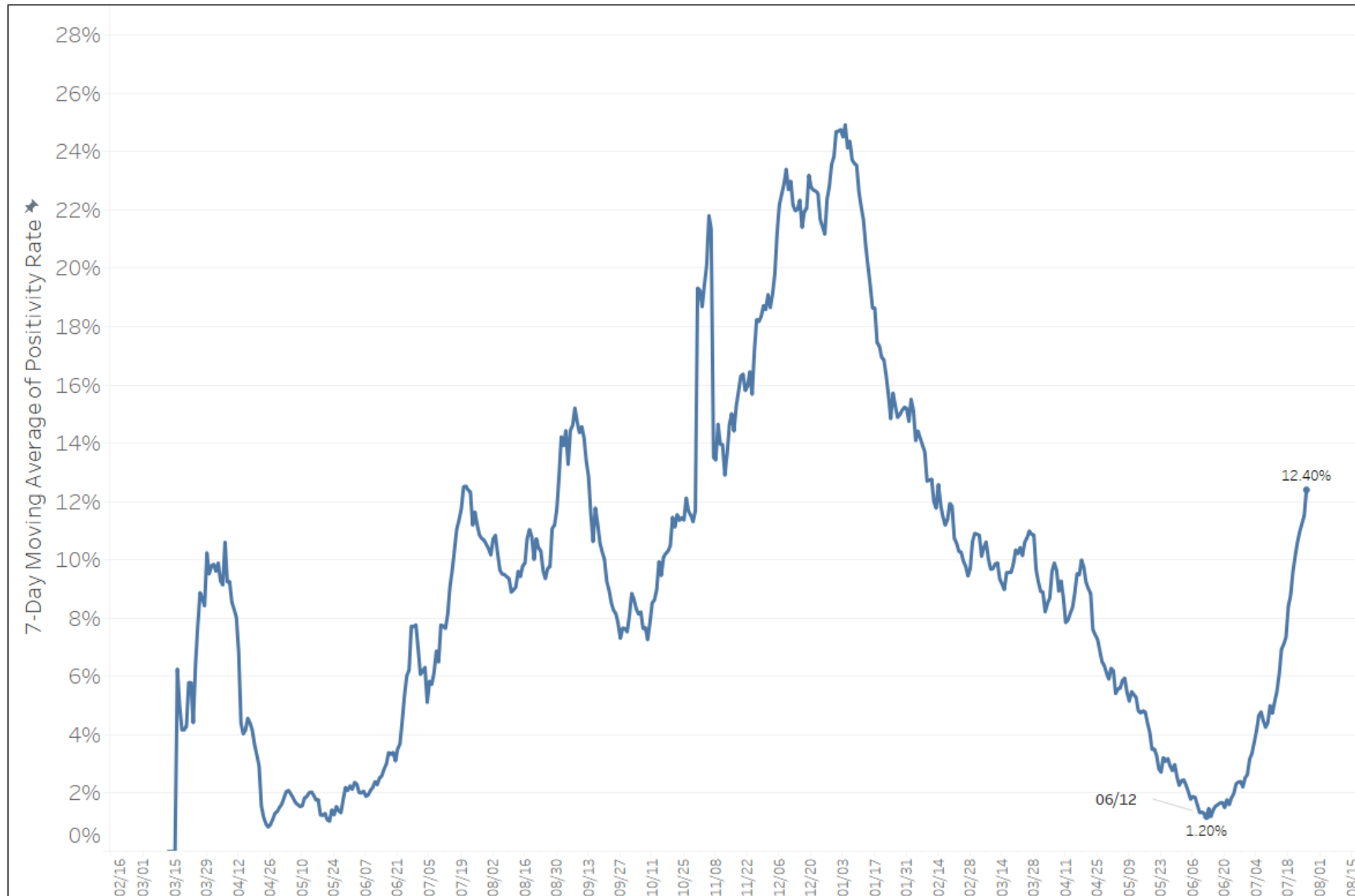
Data from the Tennessee Department of Health and Tennessee State Data Center as of July 25, 2021

# Knox County New Cases Age Demographics



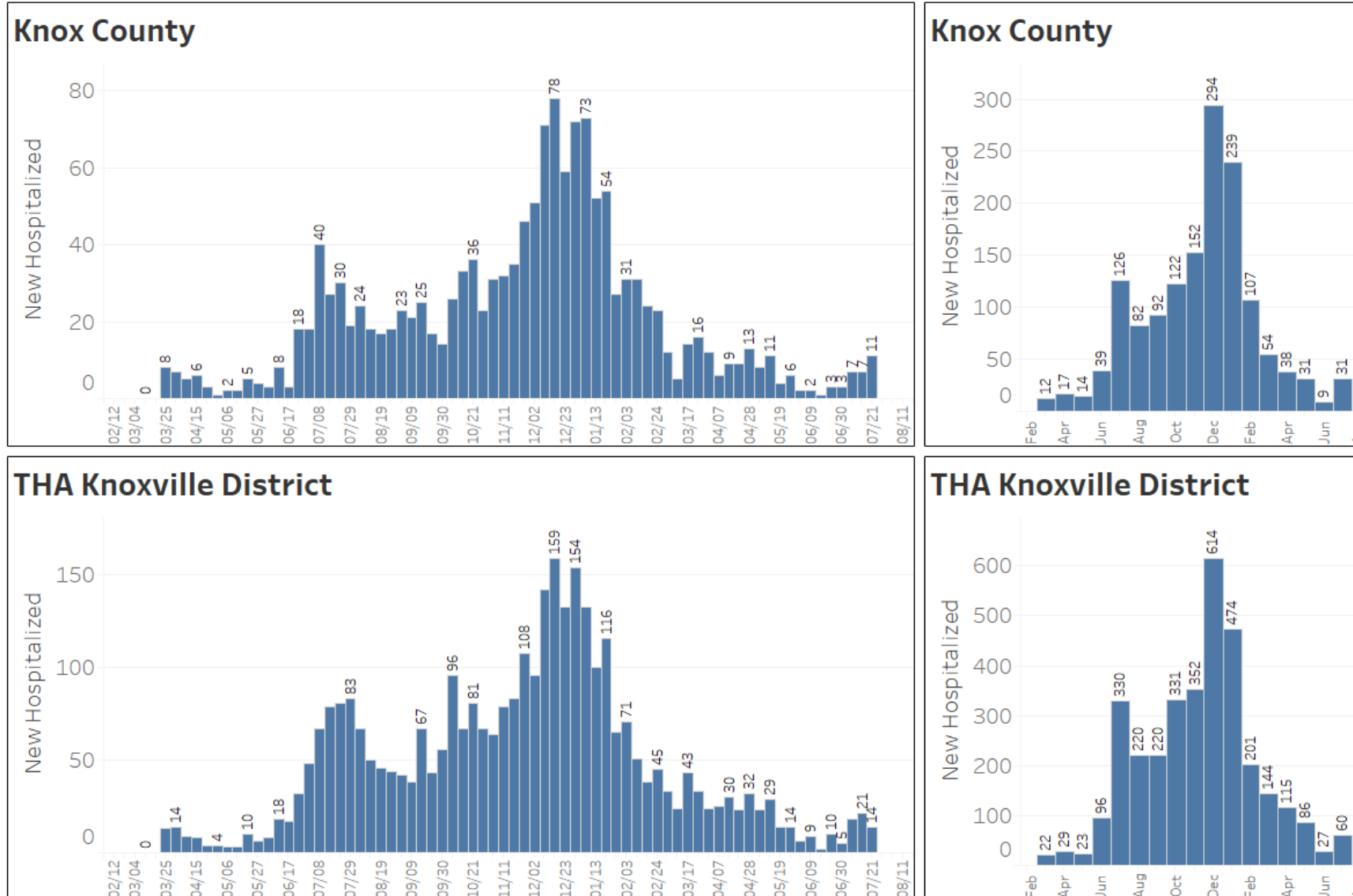
Data from the Tennessee Department of Health as of July 26, 2021

# Knox County Positivity Rate



Data from the Tennessee Department of Health and Tennessee State Data Center as of July 26, 2021

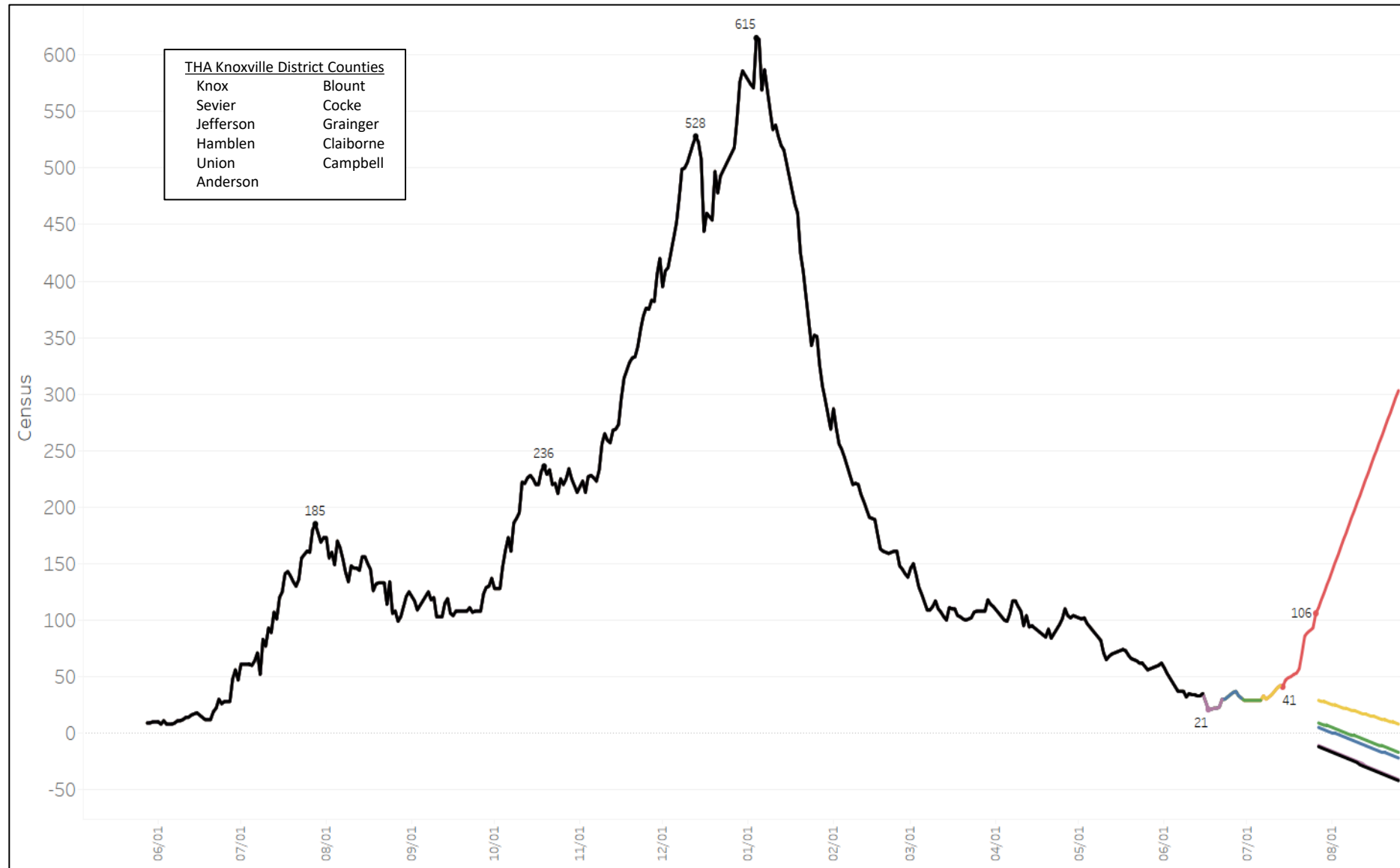
# Hospitalizations by Week/Month



# THA Knoxville District Census

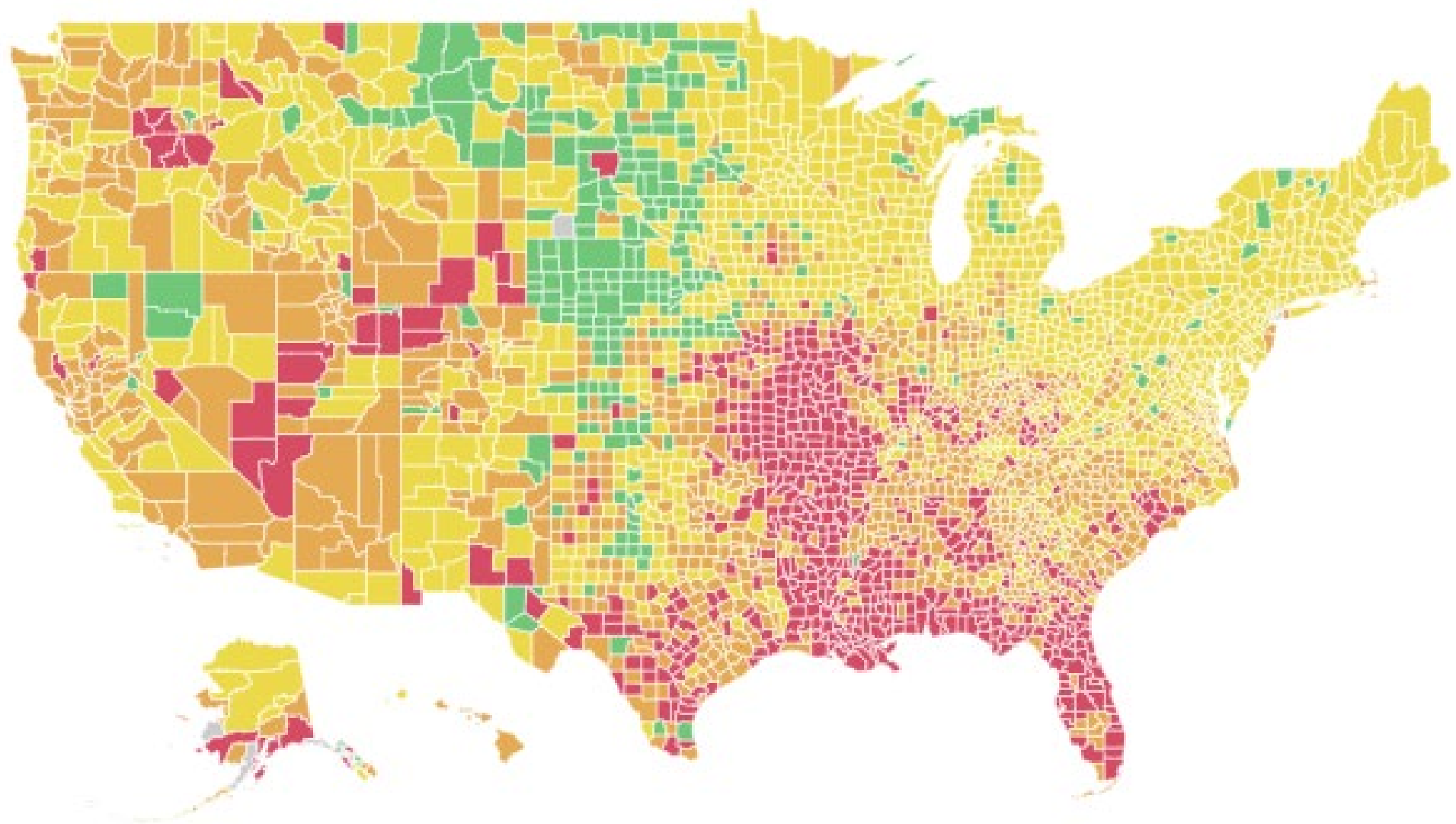


# THA Knoxville District Projection Comparison





Delta Variant in Other States



Risk Levels:

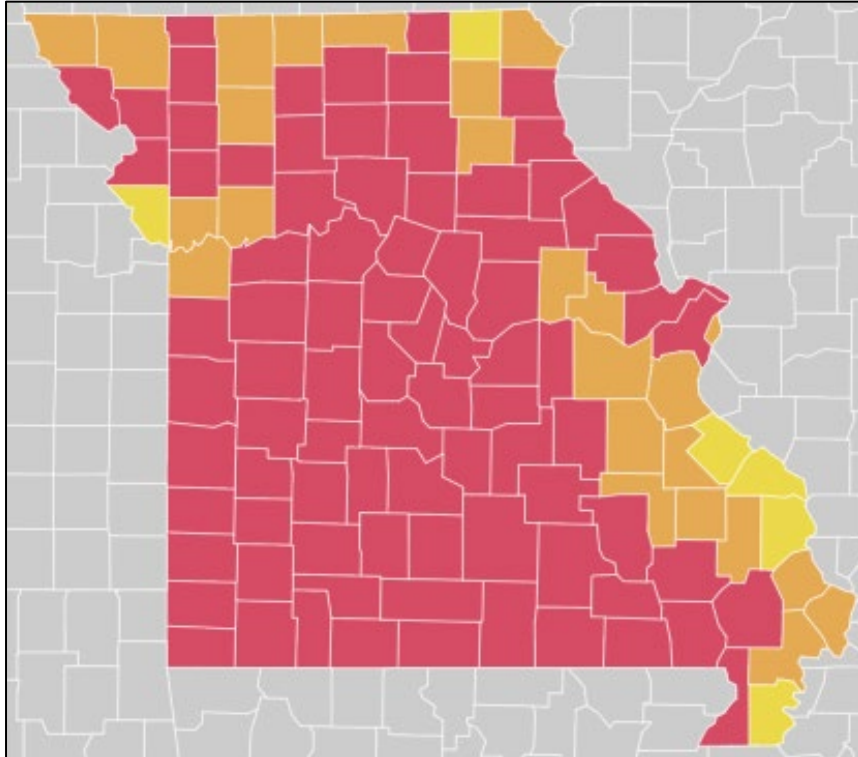
Green

Yellow

Orange

Red

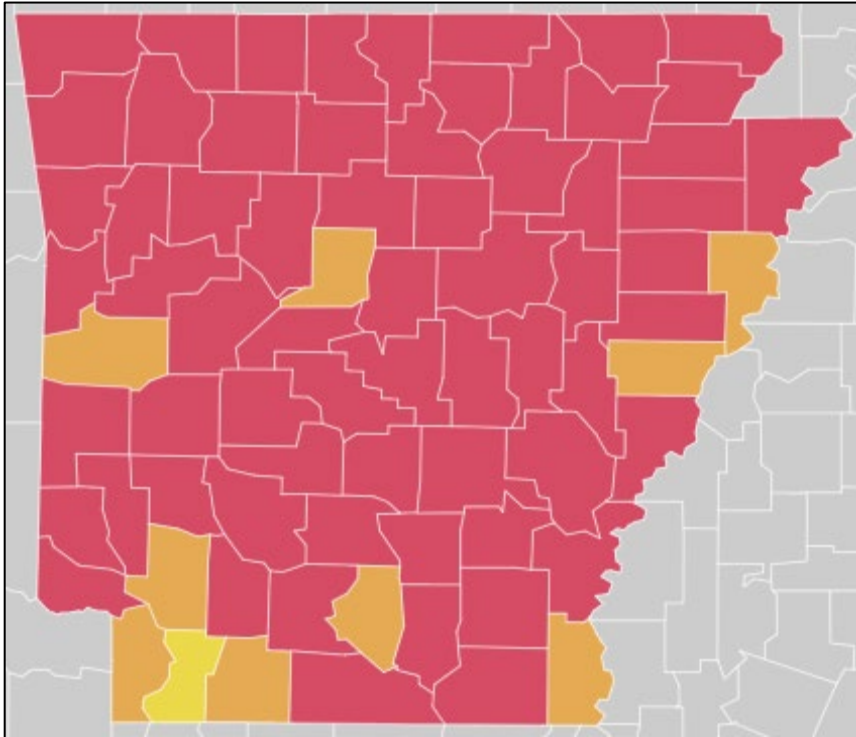
# Missouri



- *Hearing from the physicians on (hospital) staff, it's a great strain and the hospitals are certainly at maximum capacity. – Dr. Alex Hover, President of the Missouri State Medical Association*
- *In a distressing turn, hospitalizations for COVID-19 in southwestern Missouri have surpassed their winter peak, according to the local health department. – ABC News*

Cases per 100K (7 day avg)	Population Vaccinated	Case Increase Start Date	Current Wave Census v. Last Wave Peak	Current Case Growth
40.2	41%	June 07, 2021	65%	Upward Trend

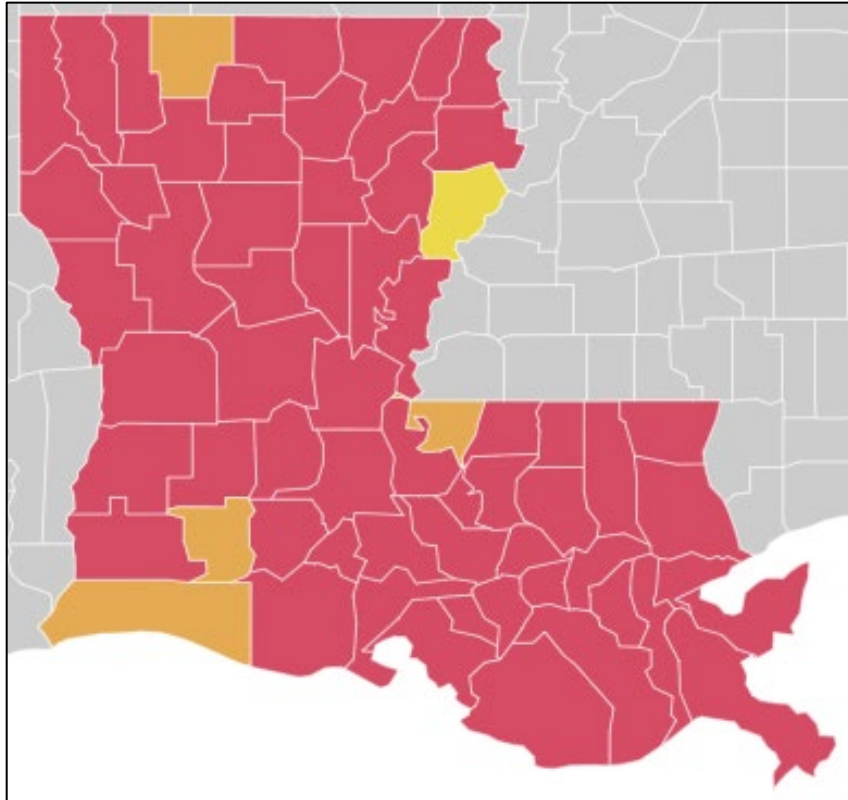
# Arkansas



- *The problem is our nursing staffing is low, so we can't fill every bed at this point. So a lot of our patients who need an ICU bed are being shipped to other states or to the closet ICU bed that's available. Our COVID unit in the ICU is full, though.* – Debbie Hewett, Director of Critical Care Service at Mercy Hospital
- *The hospital is full. COVID-19 numbers increase every day. We are staffing inpatients in the ER and recovery room. No space for transfers. Running out of caregivers.* – Dr. Cam Patterson, Chancellor University of Arkansas for Medical Sciences Hospital

Cases per 100K (7 day avg)	Population Vaccinated	Case Increase Start Date	Current Wave Census v. Last Wave Peak	Current Case Growth
51.3	36%	June 02, 2021	70%	Upward Trend

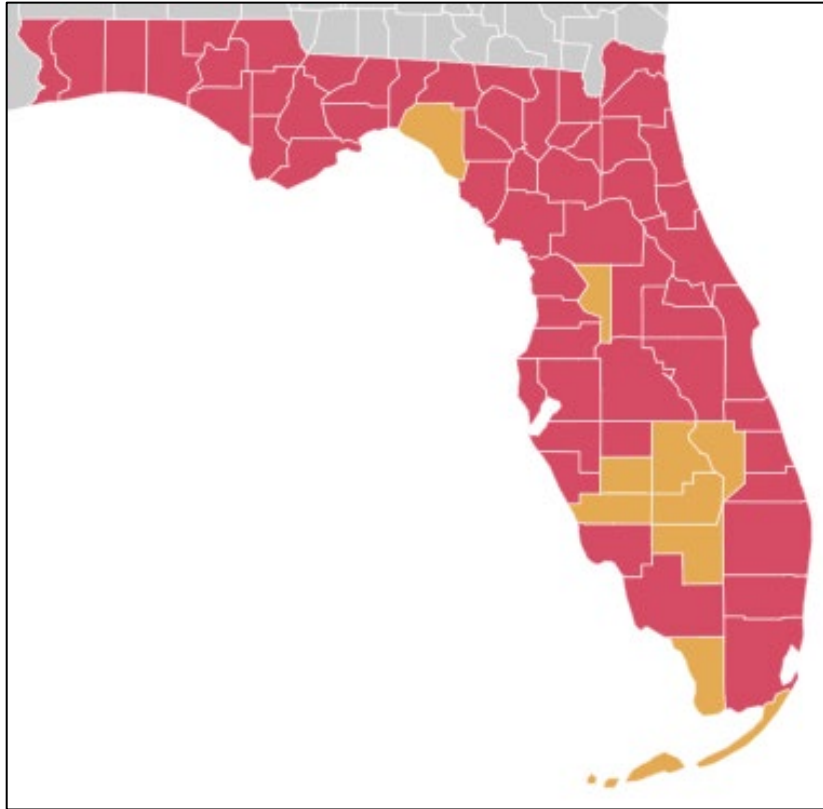
# Louisiana



- *Everyday we see patients in their 20s, we have a 19-year-old who is incredibly sick.* – Dr. Katherine Baumgarten, Director of Infection Control at Ochsner Health
- *On Sunday, the medical center stopped taking transfers of coronavirus patients from hospitals in other parts of the state because they simply did not have the capacity.* – Dr. Catherine O’Neal, Our Lady of the Lake Regional Medical Center

Cases per 100K (7 day avg)	Population Vaccinated	Case Increase Start Date	Current Wave Census v. Last Wave Peak	Current Case Growth
63.0	37%	June 15, 2021	70%	Upward Trend

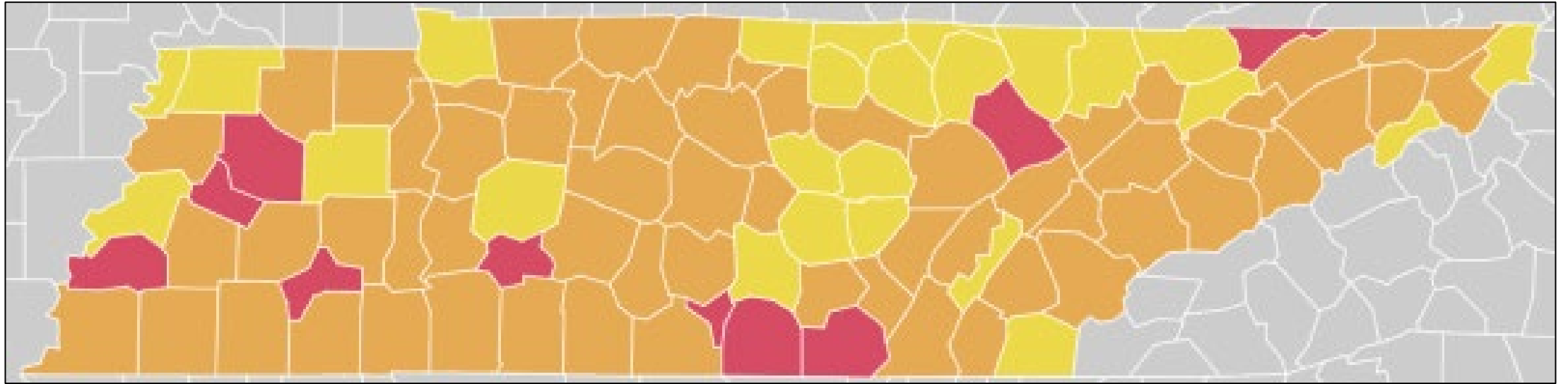
# Florida



- *We are approaching an all-time high, in terms of our inpatient, number of COVID-19 cases, which is a stretch in our capacity.* – AdventHealth Chief Medical Officer Dr. Victor Herrera
- *We've seen people who've had COVID come in with the Delta variant very sick.* – Dr. Peggy Duggan, Tampa General Hospital
- *So the virus is affecting the younger groups of people who are not vaccinated, and this delta variant is much, much more transmissible, and leading to much more severe disease...* – Dr. Sunil Joshi, Duval County Medical Society Foundation

Cases per 100K (7 day avg)	Population Vaccinated	Case Increase Start Date	Current Wave Census v. Last Wave Peak	Current Case Growth
58.2	49%	June 20, 2021	97%	Upward Trend

# Tennessee



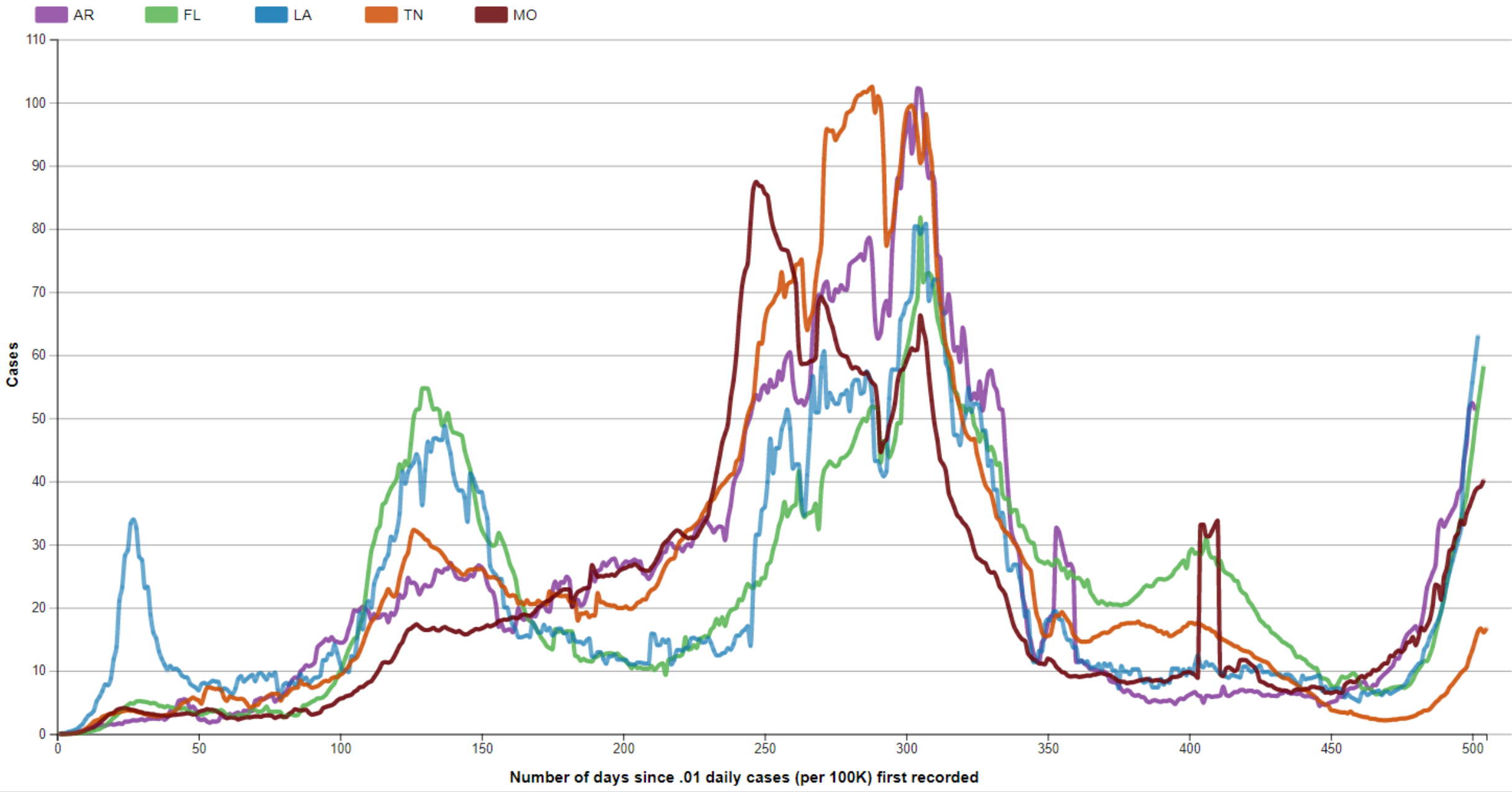
Cases per 100K (7 day avg)	Population Vaccinated	Case Increase Start Date	Current Wave Census v. Last Wave Peak	Current Case Growth
16.7	39%	June 22, 2021	22%	Upward Trend

	Cases per 100K (7 day avg)	Population Vaccinated	Case Increase Start Date	Current Wave v. Last Wave	Current Case Growth
Missouri	40.2	41%	June 07, 2021	65%	Upward Trend
Arkansas	51.3	36%	June 02, 2021	70%	Upward Trend
Florida	58.2	49%	June 20, 2021	97%	Upward Trend
Louisiana	63.0	37%	June 15, 2021	70%	Upward Trend
Tennessee	16.7	39%	June 22, 2021	22%	Upward Trend
Knox County	15.2	46%	June 16, 2021	N/A	Upward Trend
THA District	16.0	42%	June 21, 2021	17%	Upward Trend



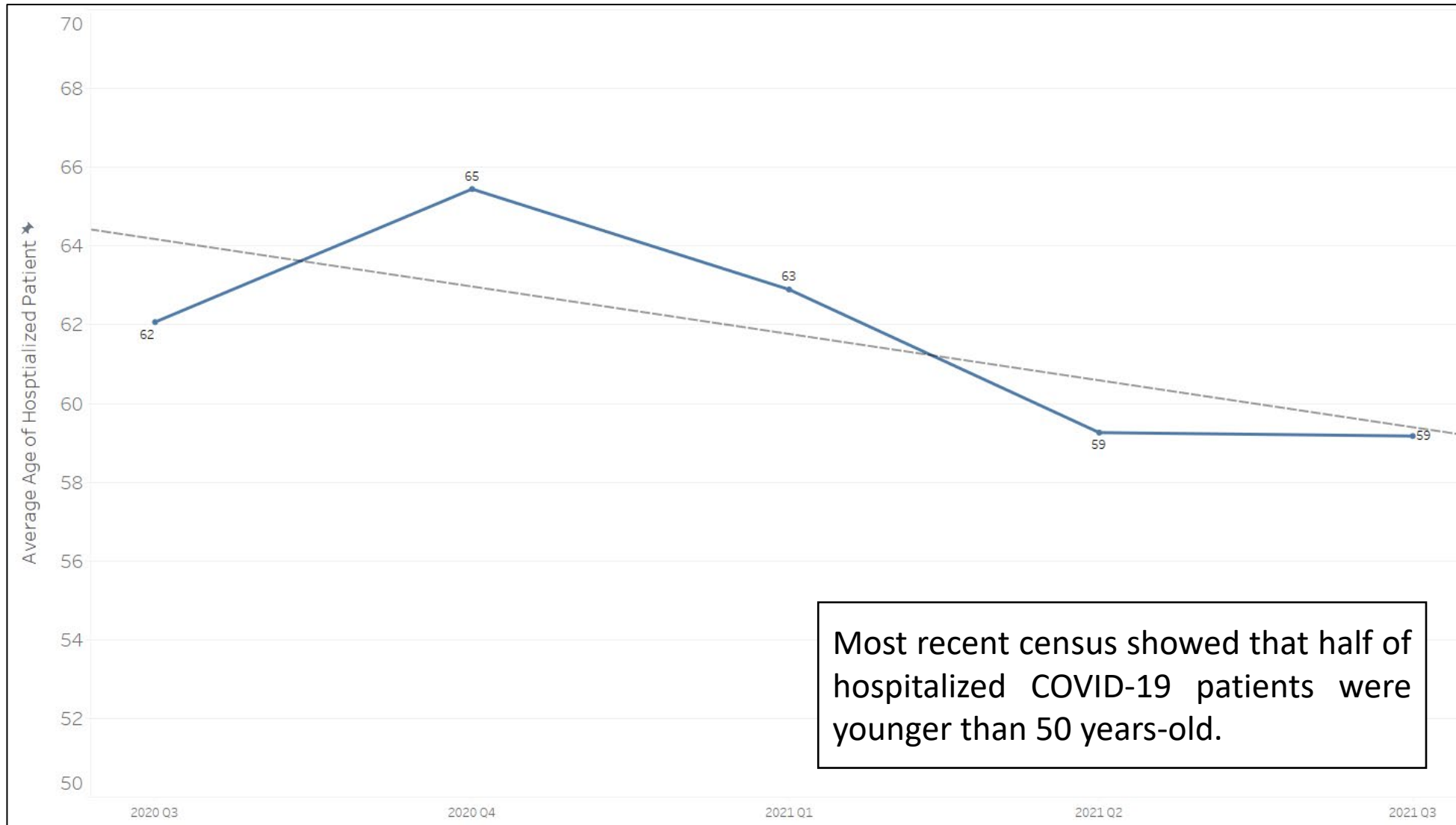
**New cases of Covid-19, reported to CDC, in AR, FL, LA, TN, and MO**

Seven-day moving average of new cases (per 100K), by number of days since .01 average daily cases (per 100K) first recorded.

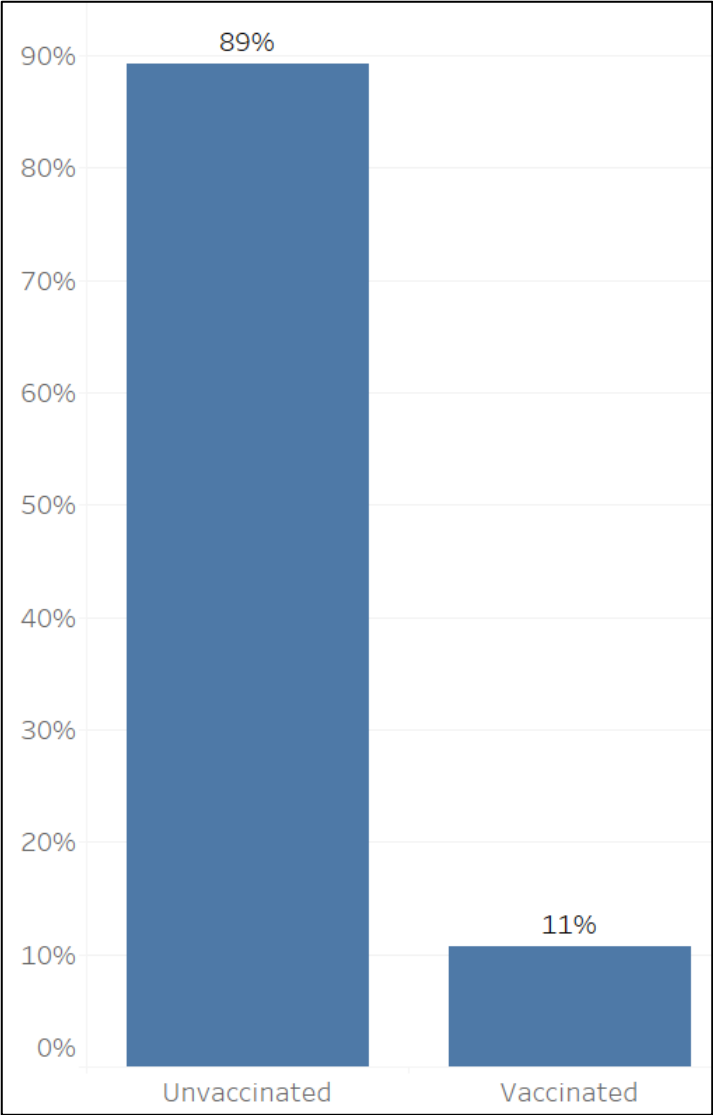


FAQs

# FAQ – Are Hospitalized COVID-19 Patients Trending Younger?

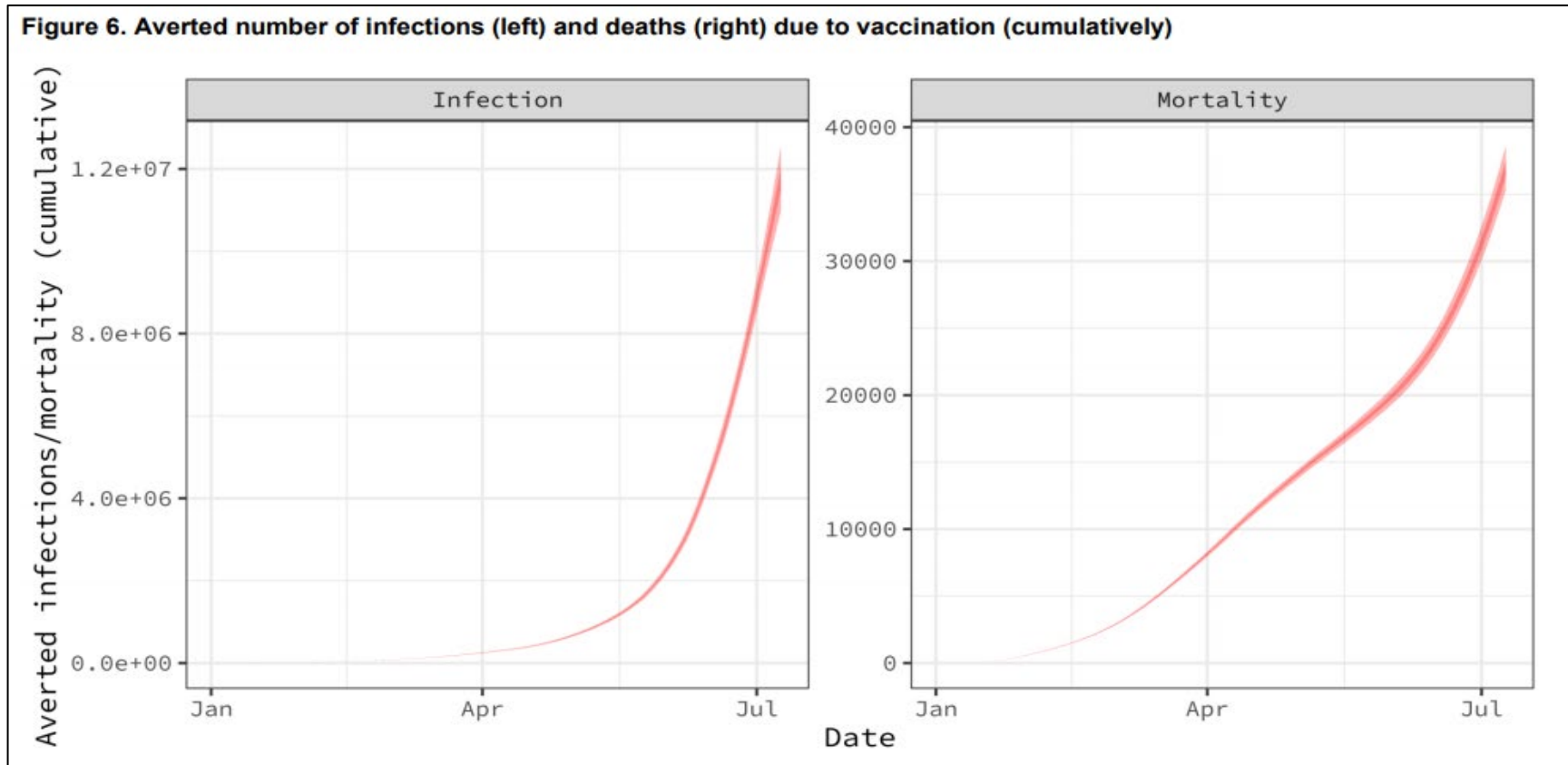


# FAQ – How Many Hospitalized COVID-19 Patients are Vaccinated?



# FAQ – Are Vaccines Effective Against the Delta Variant?

Vaccine	Doses	Delta Variant Vaccine Efficacy vs Hospitalization
Pfizer	1	94% (46% - 99%)
	2	96% (86% - 99%)



## FAQ – Why Get Vaccinated When Vaccinated People Are Being Infected?

- Just like other diseases, COVID-19 may still infect a vaccinated person, but the chances of that infection resulting in serious consequences is greatly diminished by the vaccine
- This principal has been demonstrated in several different countries, including the United States, and in our local hospitals
- Being vaccinated reduces the risk of infection for other unvaccinated people, in particular, children that are not eligible for the vaccine

## FAQ – Is It Too Late To Be Vaccinated?

- As seen previously, immunity starts building as soon as you get the first shot
- Greatest level of immunity not shown until 2 weeks after second shot, but getting vaccinated as soon as possible gives a person the best chance of not being hospitalized
- COVID-19 infections will be a threat throughout the year and being vaccinated tomorrow means you'll have strong protection through what could be an increasingly dangerous Fall 2021

## FAQ – When Will the Vaccines Be Granted Full FDA Approval?

- Full approval of a vaccine under priority review usually takes 6 months
  - Pfizer submitted for full approval May 7, 2021 (... November 7, 2021)
  - Moderna submitted for full approval June 1, 2021 (... December 1, 2021)
- The FDA has stated they intend to complete their review for full approval much quicker than the standard 6 months
- The expected timeline for full approval is unknown at this point



## FAQ – If I Get COVID-19, How Long Do I Need To Be Isolated?

- **You should strictly isolate yourself at home for at least 10 days after you became ill, and you should be feeling well (and without fever) for at least 24 hours before resuming normal activities.**
- Other members of your household should also stay home, and no visitors should be allowed.
- Stay in a specific room and away from other people in your home to the extent possible. Use a separate bathroom, if available. Household contacts can consider relocating to a separate, uninhabited housing location if available to decrease their risk of exposure.
- Where possible, ask others such as friends or family, to get food or necessities for you.
- If you must leave home, such as to seek medical care, wear a face covering if you have one.